

## MAPSA Technology Center

MAPSA Technology Center (MTC) is a software development group focused on development of technical software in oil and gas industry. Our products are innovative, sophisticated, and user friendly, which provides practical and advanced solutions for petroleum industry challenges.

MTC has grown on the basis of technical excellence and client satisfaction. We focus on the edge of research in petroleum engineering and implement the “best solutions” into our software products through knowledge transfer, and development of new ideas and technologies.

### Our Software Products:

**PVT Pro** is a professional user-friendly windows-based software application designed for modeling the phase behavior and properties of reservoir fluids. The unique asphaltene modeling module of this software, provides a powerful tool for asphaltene precipitation prediction.










**Centri Pro** is a software for running and analysis of centrifugal capillary pressure and relative permeability experiments (Special Core Analysis). The software has two modules, one for running the experiment and capturing the raw pictures and one for analyzing the pictures through image processing and calculate the relative permeability and capillary pressure curves.

**ML Pro** is a highly responsive, interactive monitoring software that is focused on monitoring the drilling parameters. Employing modern and efficient software development technologies makes **ML Pro** superior to its worldwide counterparts in terms of computational speed and graphical interface.

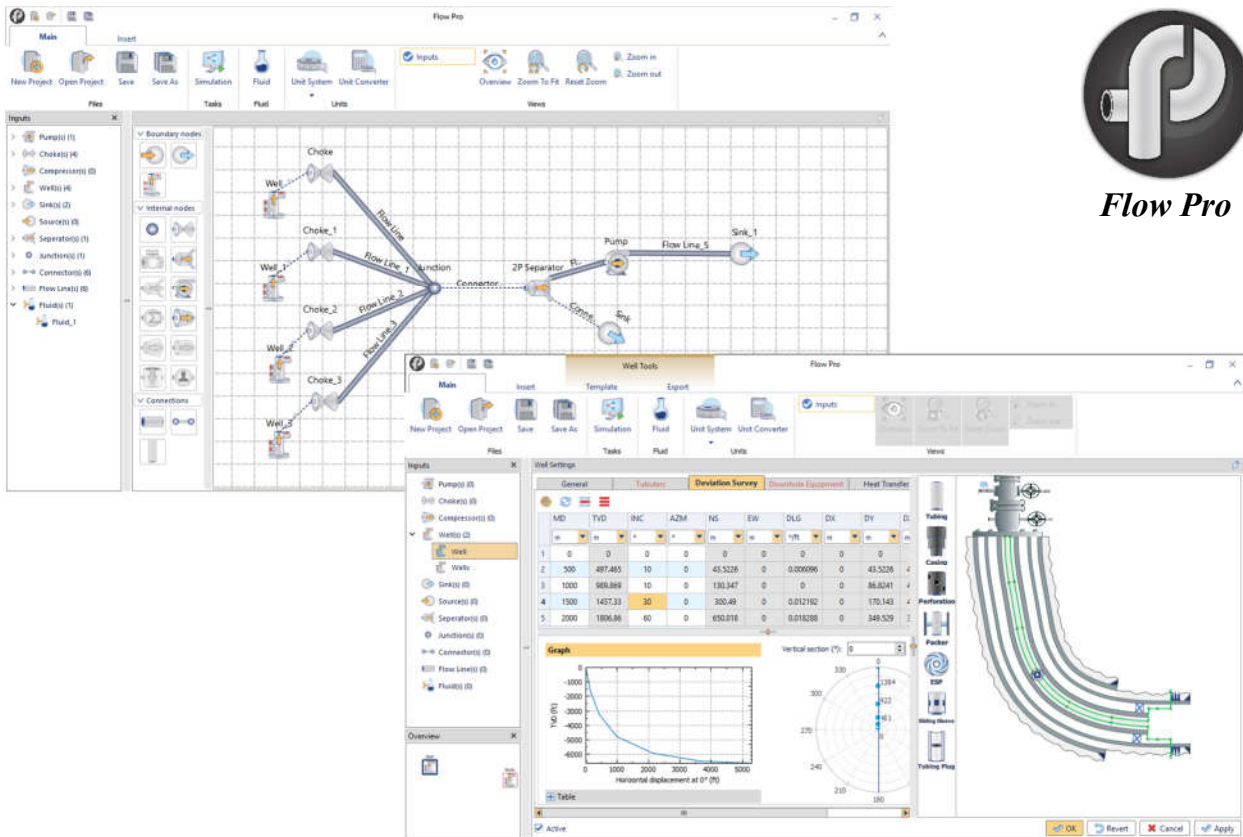
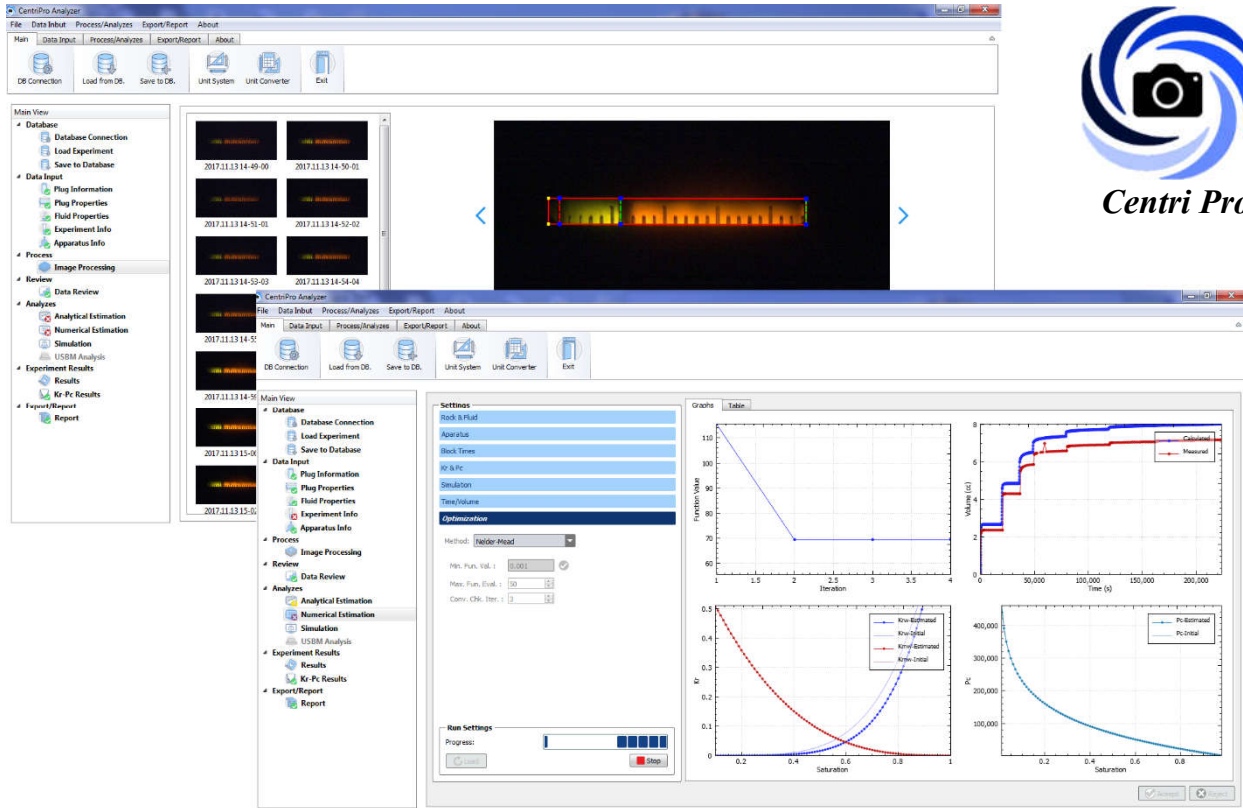
**Flow Pro** is a simulation software that rigorously models steady-state multiphase flow in oil, gas/gas condensate wells, pipelines, and surface facilities. **Flow Pro** combines a proven multiphase flow modeling algorithms and software analysis techniques to create a robust and efficient multiphase flow simulator.

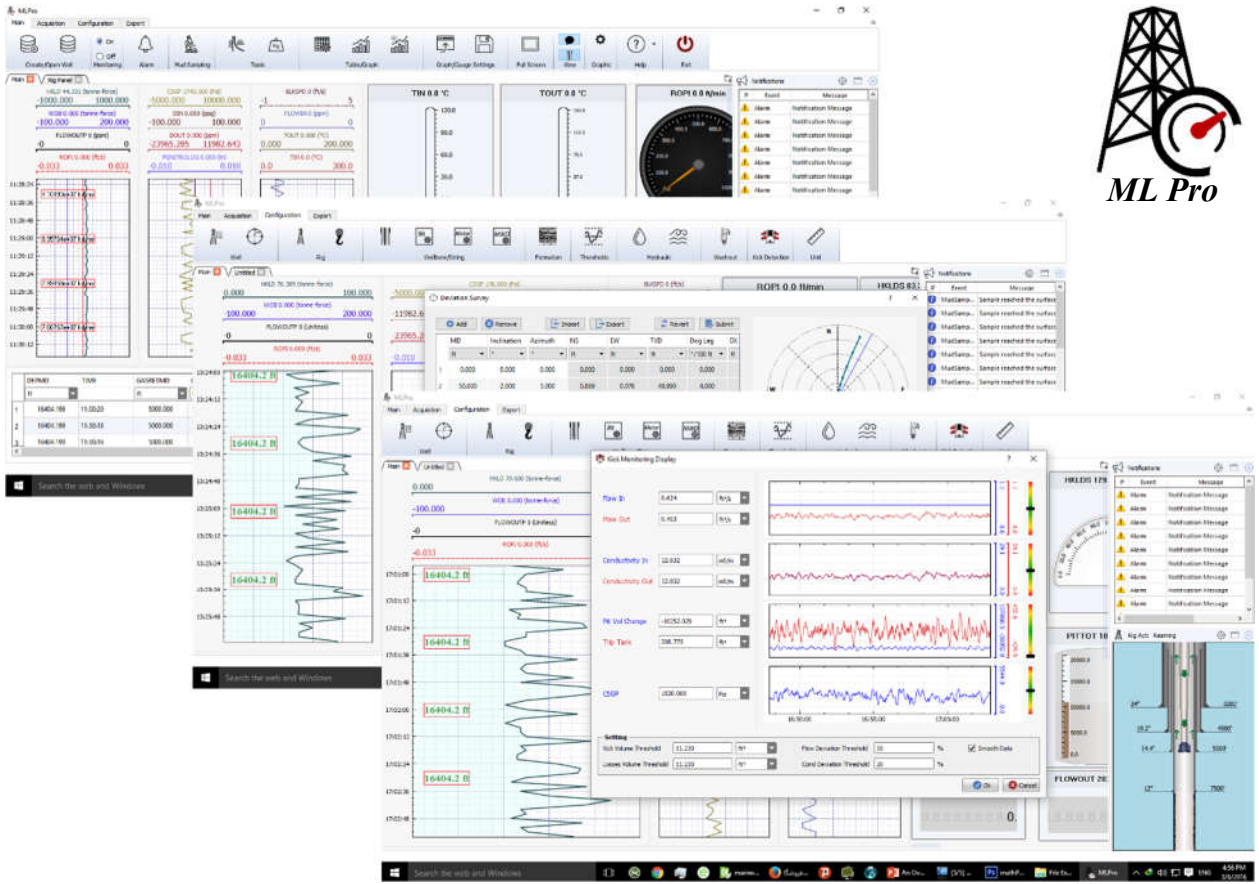
**Lab Pro** casts a new look on reliable and integrated storage of valuable core analysis data. Integrated data storage along with a user-friendly graphical interface, makes **Lab Pro** a functional program for storage, management, and reporting of laboratory data.

### Our clients:

 N.I.S.O.C.	 I.C.O.F.C.	 I.O.O.C.	 N.I.O.C. Exploration Directorate	 PHEDCO
 N.G.S.C.	 P.O.G.C.	 P.E.D.E.C.	 Research Institute of Petroleum Industry	

For more information, please refer to our website: [www.mapsatech.com](http://www.mapsatech.com)







PVT Pro

